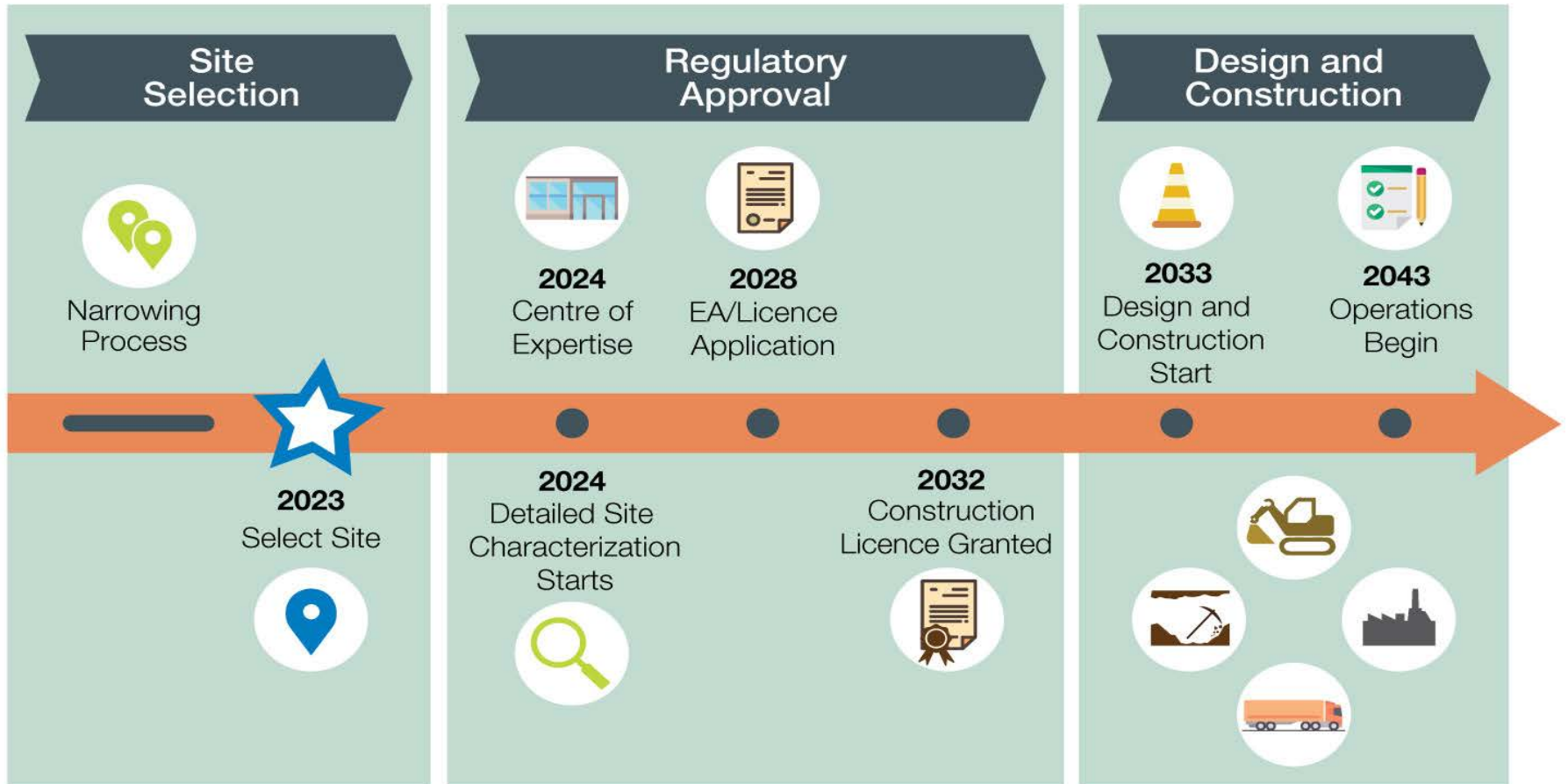


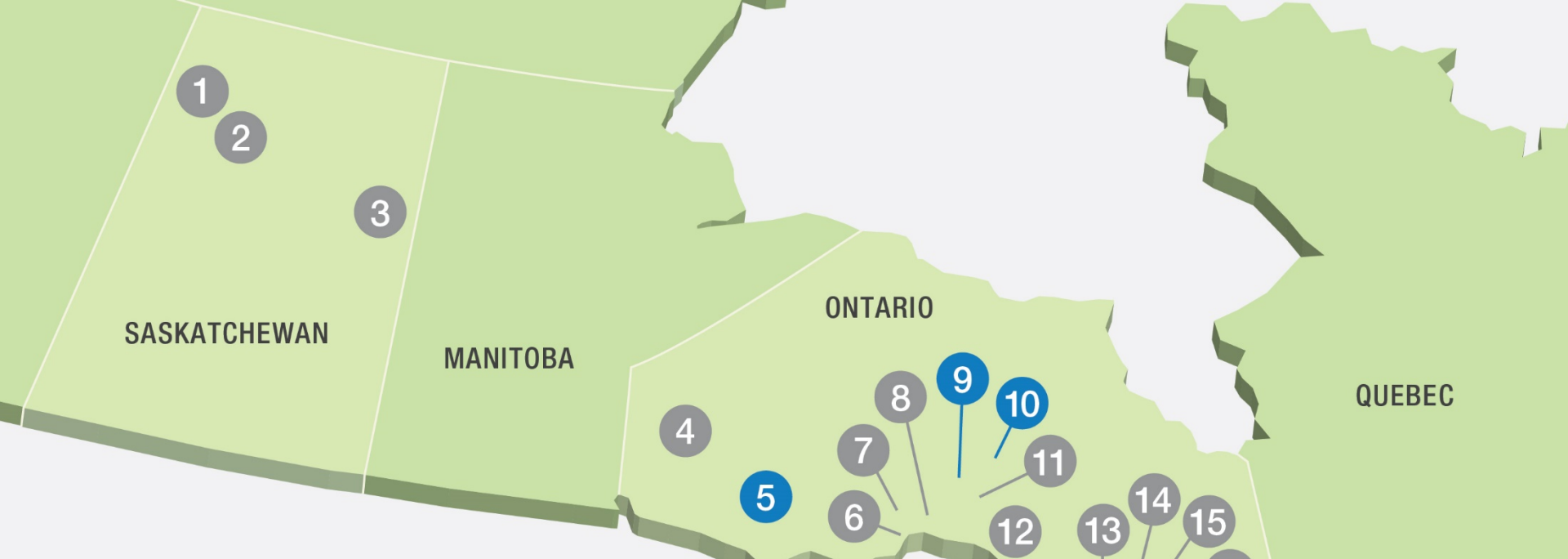


**Update on next phase of work
in Huron-Kinloss:
Partnership & Land Access
Process**

Allan Webster,
Director Regulatory Affairs and Environmental Assessment

Project Timelines





Communities That Expressed Interest in the Site Selection Process

● Assessments Underway in the Area

- 5. Ignace
- 9. Manitouwadge
- 10. Hornepayne
- 19. Huron-Kinloss
- 21. South Bruce

● Communities Not Identified for Further Study

- 1. English River First Nation
- 2. Pinehouse
- 3. Creighton
- 4. Ear Falls
- 6. Red Rock
- 7. Nipigon
- 8. Schreiber
- 11. White River
- 12. Wawa
- 13. Blind River
- 14. Elliot Lake
- 15. The North Shore
- 16. Spanish
- 17. Saugeen Shores
- 18. Arran-Elderslie
- 20. Brockton
- 22. Central Huron



Criteria for Selecting a Preferred Site

Safety

Confidence a deep geological repository can be developed with strong safety case at that location

Transportation

Confidence a safe, secure and socially acceptable transportation plan can be developed

Partnership

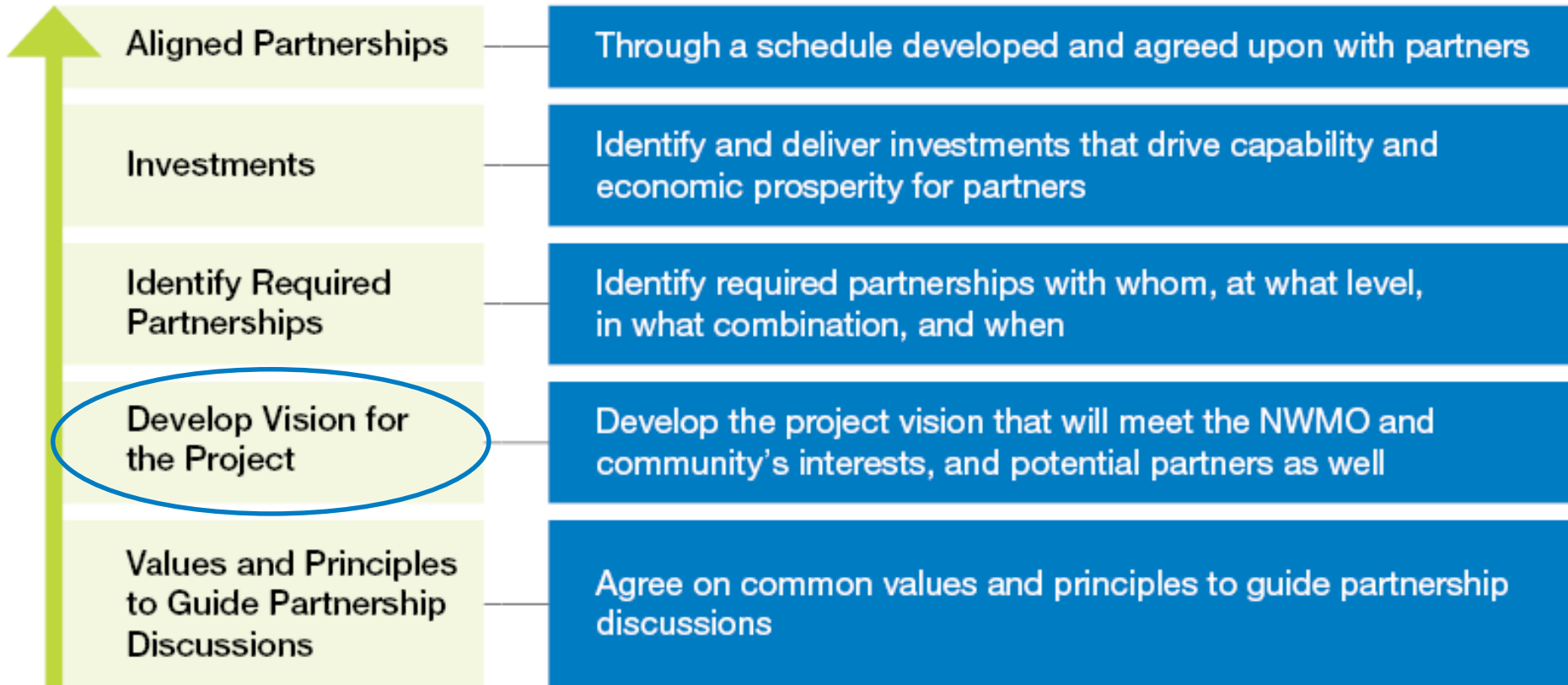
Confidence a strong partnership can be developed – with interested community, First Nation and Métis communities in the area, and surrounding communities

Exploring the Potential for Partnerships— Key Components

**Strong
Aligned
Partnerships**



Roadmap to Partnership (2018-2023)



Community Well-Being



Communities will want to consider the project from all dimensions of long-term sustainability

Shared Values

Principles guiding partnership discussions include:

- Safety first and foremost
- Environment protection
- Clear communication, concise, accurate, understandable
- Open, honest, informed decision-making
- Trust and respect
- Inclusive and collaborative discussions
- Community well-being and broad benefit now and future
- Regional involvement and benefit

Next Steps In Assessing a Potential Site

- Site investigations, including deep borehole and environmental monitoring drilling in 2020
- Data will be used to further assess safety of a potential repository site
- The NWMO initiated a land access program to assemble sufficient land for site investigations and the project
- The land access program is not an indication that the NWMO has selected Southern Ontario for the project



What Is the Land Access Process? (2019)

- We are seeking to sign option agreements with landowners that will allow the NWMO to:
 - Access land for site investigations on a potential repository site
 - Purchase the land if the site is selected for the project and the community is willing to host the project
- Land owners will be able to continue current land use
- **No site has been selected.** This is a next step in our site selection process

NWMO Commitment

The project will only proceed with the involvement of municipal and Indigenous communities in the area, and surrounding communities, working in partnership to implement it





Questions?